

Doctrine

Doctrine Sans

A contemporary sans-serif typeface with an agreeable character, Doctrine Sans is the moderate comrade of the display typeface Doctrine Stencil. From the obscure starting point of the North Korean national airline livery, Doctrine has grown to encompass a series of more mature typographic influences. By blending elements of twentieth-century neo-grotesque, humanist and geometric styles, Doctrine is at once universal and idiosyncratic. Including a vast array of ligatures and alternate characters in five weights ranging from thin to black, Doctrine is capable of handling a multitude of testing typographical situations.

Weights

Thin
Light
Regular
Bold
Black

OpenType Features

Stylistic Alternates
Tabular Lining figures
Tabular Oldstyle figures
Proportional Oldstyle figures
Proportional Lining figures
Discretionary Ligatures
Superscript/Subscript
Fractions

Unicode Ranges

Latin
Latin extended A

Supported Languages

Afar	Hungarian	Romani
Afrikaans	Icelandic	Romanian
Albanian	Indonesian	Sango
Aragonese	Interlingua	Sámi (Northern)
Basque	Irish Gaelic	Scottish Gaelic
Bosnian	Italian	Serbian
Breton	Karelian	Shona
Catalan	Kirundi	Slovak
Crimean Tatar	Kurdish	Slovene
Croatian	Ladin	Sorbian
Czech	Latvian	Spanish
Danish	Lithuanian	Swahili
Dutch	Luxemburgish	Swati
English	Malagasy	Swedish
Esperanto	Malay	Tagalog
Estonian	Maltese	Tahitian
Faroese	Māori	Tokelauan
Finnish	Norn	Tsonga
French	Norwegian	Turkish
Frisian	Occitan	Umbundu
Friulian	Palauan	Veps
German	Polish	Welsh
Greenlandic	Portuguese	Wolof
Hawaiian	Rhaeto-Romanic	Zulu

Conceptual Background

VirusFonts has long been interested in the link between ideology, language and typography, and it is this concept that inspired the creation of a new typeface. Following an extreme isolationist and authoritarian ideology, North Korea – the world’s last Stalinist state – affords its population little freedom of movement. Considered by many to be a fundamental human right, air travel facilitates freedom of mobility between states. Air Koryo, the state-owned national flag carrier airline of North Korea, therefore appears to be somewhat of an oxymoron. With an unsurprisingly dubious safety record and dismal reviews, Air Koryo is not held in high regard, yet there is something wonderfully naive about its attempt to look like a serious airline. Central to this venture is its rudimentary aircraft livery and branding – often crude in application and at times, even looking hand-painted. Once taking the form of a functional stencil typeface, the logo has now metamorphosed into a modern sans-serif. This peculiar conceptual mix – part political philosophy, part corporate branding – inspired the development of a contemporary, human interpretation of the neo-grotesque model, that most ideological of typographic forms.

Doctrine Black

Doctrīne Black

Doctrine Bold

Doctrīne Bold

Doctrine Regular

Doctrīne Regular

Doctrine Light

Doctrīne Light

Doctrine Thin

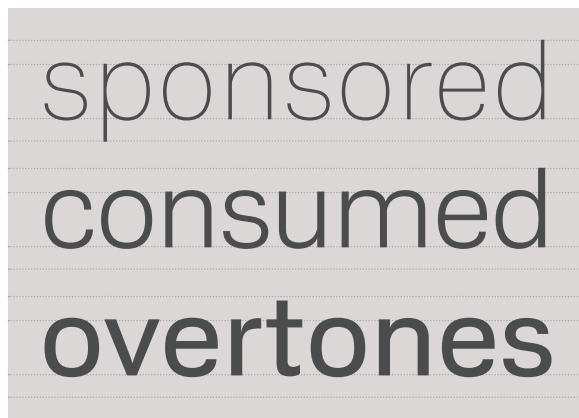
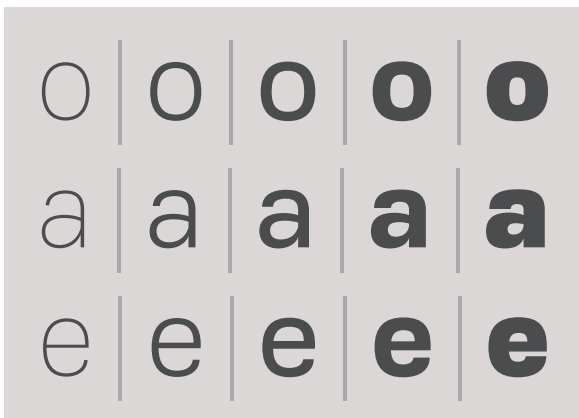
Doctrīne +thin

Design Information

Escaping beyond the conceptual, political and historical starting points, numerous typographic references have informed the framework of Doctrine. Inspired by mid-twentieth-century modernist idealism but guided by post-modern relativism, Doctrine has evolved into a twenty-first century utopian sans-serif. Pursuit of utopian perfection suggests a purity, or purification — an eradication of extraneous detail — yet, in contrast, the ideology of Doctrine is one of inclusion. The inclusive approach allows a curious blend of modernist, geometric and humanist forms to coalesce in contemporary style.

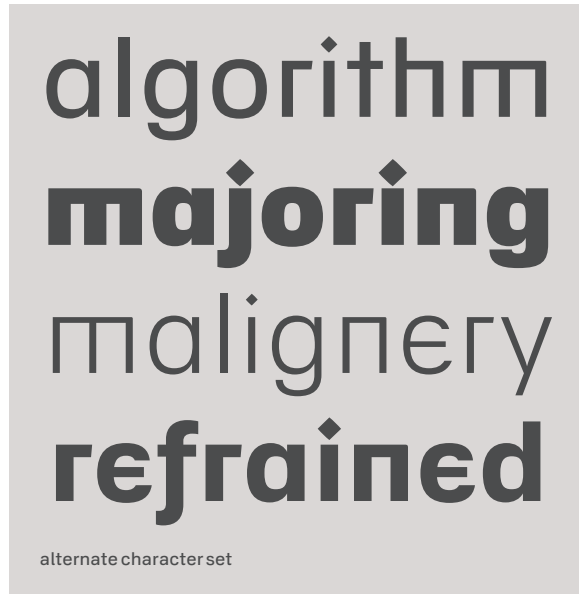
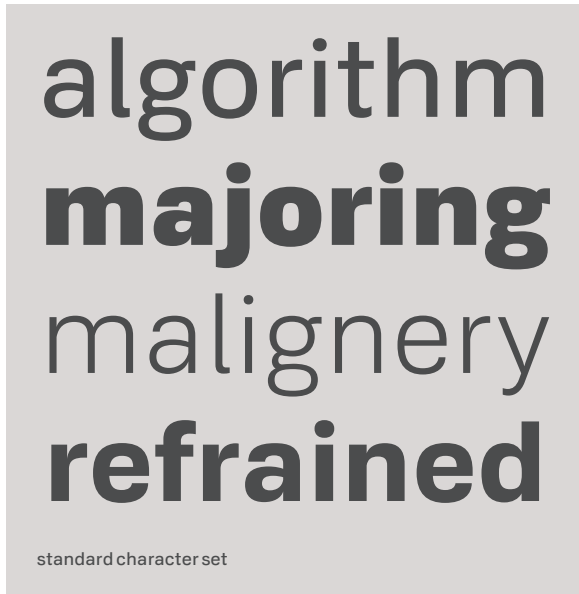
Necessary Transform
Efficient Environment
Pedestrian Circulation
Abandon Stratification
Reformulated Ideas

The basic structure of Doctrine was informed by the neo-grotesque model, notably Adrian Frutiger's masterpiece Univers and Max Miedinger's ubiquitous Helvetica — the behemoths of mid-twentieth-century modernism. Yet unlike the aforementioned faces, Doctrine is less clinical and more human in appearance. The rounded, lighter weights speak with graceful composure whilst the large x-height, low contrast and squarer, heavier weights give Doctrine an affable charm and a persuasive voice.



Design Information

A number of characters draw inspiration from Edward Johnston's influential humanist sans-serif for the London underground, adding a pre-modern benevolence to the primary character set and a quirky geometry to the stylistic alternates. Paul Renner's experimental drawings for his visionary Futura provided inspiration for the some of the unusual alternates, as well influencing the more conventional geometric forms.



Adding a playful note to headlines, the alternate capitals drawn on a diverse range of sources. The asymmetric **A** directly references the Air Koryo livery. Informed by the modular widths of geometric typefaces, the **E** and **F** are included with reduced widths. Also influenced by geometrics are the primary **G** and **Q**, their respective alternates are based on the grotesque model, as are the alternate **M** and primary **K**. The unusual **R** includes a concave leg reminiscent of Venetian serif faces whilst the **Y** is based on the Cyrillic character **У**.

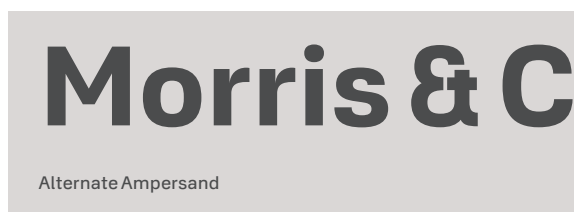


Design Information

In a nod to typographic history, Doctrine includes a multitude of ligatures. The move away from moveable type saw a steady decline in the typesetting of ligatures. Now, however, contemporary OpenType technology allows for an almost limitless number of glyphs, meaning ligatures can be revived and reconsidered for the twenty-first century, bringing a curious flair to body and headline text setting.



Delving deeper into typographic history, Doctrine features historical forms and alternate characters derived from foreign alphabets. That now unused but well-known historical minuscule, the long s, fell out of use in the early nineteenth century but is revived to work with Doctrine's contemporary forms. Traditionally the long s occurred in the middle or at the beginning of a word – the most famous example being the in the word **congrejs** in the United States Bill of Rights. From the foreign alphabets, the lowercase **e** is inspired by epsilon, the fifth letter of the Greek alphabet and a precursor to the latin e, and the alternate **f** is inspired by the hooked f, the italic form of which, *f*, is used to signify currencies named florin.



128–142 High Road,
Ilford, Essex, IG1 1DD

Facilitating distinction between the numeral 1, uppercase I and lowercase l, the primary character set includes a foot serif for the lowercase l, a serified I and an armed figure 1. For a more compact and bold headline, the alternate uppercase I can be used.

SPORTS INITIATION

Doctrine includes four figure styles, two proportional (variable width) styles and two tabular (fixed width). The default figure style is proportional lining – full cap height figures that work best with all-caps settings. Oldstyle figures are designed with ascenders and descenders and have proportions compatible with the lowercase characters for minimal disruption when setting body text. For setting numbers in tables, both lining and old style tabular figures are included.

LDN 2012

Ldn 2012

1 | 2 | 3 | 4 | 5

1 | 2 | 3 | 4 | 5

Language support

Doctrine supports Latin and Latin Extended A Unicode ranges, covering 72 languages. Stylistic alternates are included with the full range of diacritical marks. See page two for a full list of supported languages.

À Á Â Ã Ä Å Ā Ă Ą Æ É
Ç Ć Ĉ Ċ Č Ď Đ È É Ê Ë Ē Ě Ę
Ĕ Ğ Ğ Ğ Ğ Ĥ Ħ Ì Í Î Ï Ī Ĭ Ĵ Ķ
Ł Ł Ł Ł Ń Ń Ń Ń Ń Ò Ó Ô Õ Ö
Ø Ō Ő Œ Ŕ Ŗ Ŗ Š Š Š Š Ţ Ţ Ŧ Ù
Ú Û Ü Ũ Ū Ŭ Ů Ű Ų Ý Ž Ž Ž Ɔ

à á â ã ä å ā ă ą æ ç ć ĉ č ċ đ
đ ð è é ê ë ē ě ę ě ğ ğ ğ ğ ħ ħ
ì í î ï ĩ ĵ ĵ ĵ κ λ λ λ λ Ń Ń Ń Ń Ń ò
ó ô õ ö ø ō ő œ ŕ ŕ ŕ š š š š š Ɔ
ţ ţ ţ ţ ù ú û ü ũ ū ŭ ů ų ý ž ž ž

VLIEËNIER
të hapësirës
LA CÀRREGA
ograničenje
TOTALITÆRE
geëlimineerd
AÛTORITATO
väljatõmbe
NÄLÄNHÄTÄ
synthétique
IDEOLOXÍA
rückenlehne
REPÜLÖGÉP
flugstöðinni
ATHSHLÁNÚ
izlūkošanas
IŠKROVIMO
bilqieğda
POZOSTANA
constituição
RESTRICȚIE

náboženstva
PUŠČAVNIK
de ermitaño
AVGÅNGAR
arındırılmış
TOTALITÊRE
çmilitarizuar
L'EXECUCIÓ
náboženství
UDFØRELSE
malfideligo
VÄLJATÕMBE
työntekijät
LE KÉROSÈNE
reeducación
INXECCIÓN
verfälschung
BIZTONSÁGI
framkvæmd
EITLÍOCHTA
izmitināšana

Stylistic Alternates

Doctrine features a series of upper and lowercase stylistic alternates. In Adobe Illustrator, stylistic alternates are accessed via the OpenType panel, selecting **Stylistic Alternates**. In Adobe InDesign, stylistic alternates are accessed via the character panel, selecting **OpenType > Stylistic Sets > Set 1**.

A E F G I K M N P Q R + Y

a e f g h i j k l m n r t y

A E F G I K M N P Q R + Y

a e f i j i k m n r t y

A E F G I K M N P Q R + Y

a e f i j i k m n r t y

A E F G I K M N P Q R + Y

a e f i j i k m n r t y

A E F G I K M N P Q R + Y

a e f i j i k m n r t y

Stylistic Alternates

Doctrine features a series of upper and lowercase stylistic alternates. In Adobe Illustrator, stylistic alternates are accessed via the OpenType panel, selecting **Stylistic Alternates**. In Adobe InDesign, stylistic alternates are accessed via the character panel, selecting **OpenType > Stylistic Sets > Set 1**.

Standard Character Set | 36pt Size | 42pt Leading

Anticipation
East Asia
Foreign
Guarded
Isolation
North Korea
Mandate
Nuclear
Pyongyang
Qurantine
Regimented
Tyranny
Yodok

Alternate Character Set | 36pt Size | 42pt Leading

Anticipation
East Asia
Foreign
Guarded
Isolation
North Korea
Mandate
Nuclear
Pyongyang
Qurantine
Regimented
†yranny
Yodok

Ligatures

In addition to standard digraphs such as æ and œ, Doctrine includes a total 21 ligatures in the standard stylistic set, of which 15 are categorised as **standard** and 7 are categorised as **discretionary**. One ligature in particular is somewhat of an exception: occurring in the Dutch language, the combination of letters I and J are considered a digraph. In Doctrine however, the combination is achieved as an uppercase discretionary ligature – there is no corresponding lowercase ligature. In Adobe Illustrator, ligatures are accessed via the OpenType panel, selecting **Standard Ligatures** and **Discretionary Ligatures**. In Adobe InDesign, ligatures are accessed via the character panel, selecting **OpenType > Standard Ligatures** and **OpenType > Discretionary Ligatures**.

ct ct ct ct ct	dictatorship
fb fb fb fb fb	wolfberries
ff ff ff ff ff	ineffable
ffb ffb ffb ffb ffb	offbeat
ffh ffh ffh ffh ffh	offhanded
ffi ffi ffi ffi ffi	disaffirming
ffj ffj ffj ffj ffj	affjedring
ffl ffl ffl ffl ffl	afflict
ffy ffy ffy ffy ffy	affying
fh fh fh fh fh	serfhood
fi fi fi fi fi	confined
fj fj fj fj fj	fjelds
fk fk fk fk fk	offkey
fl fl fl fl fl	flippant
fy fy fy fy fy	falsifying
gi gi gi gi gi	flagitious
gy gy gy gy gy	ideology
IJ IJ IJ IJ IJ	IJsselmeer
st st st st st	resistance
Th Th Th Th Th	Theocrats
ty ty ty ty ty	loyalty
tty tty tty tty tty	prettyish

Alternate Ligatures

Doctrine includes a further 14 ligatures in the alternate stylistic set, of which 10 are categorised as **standard** and 4 are categorised as **discretionary**. In Adobe Illustrator, ligatures are accessed via the OpenType panel, selecting **Standard Ligatures** and **Discretionary Ligatures**. In Adobe InDesign, ligatures are accessed via the character panel, selecting **OpenType > Standard Ligatures** and **OpenType > Discretionary Ligatures**.

ct ct ct ct ct	dictatorship
fh fh fh fh fh	offhanded
fi fi fi fi fi	disaffirming
fi fi fi fi fi	afflict
fy fy fy fy fy	affying
fh fh fh fh fh	serfhood
fi fi fi fi fi	confined
fi fi fi fi fi	fields
fi fi fi fi fi	flippant
fy fy fy fy fy	falsifying
st st st st st	resistance
Th Th Th Th Th	Theocrats
ty ty ty ty ty	loyalty
ty ty ty ty ty	prettyish

Proportional Figures

Doctrine includes four figure styles. Proportional figures used for setting numbers in text are available in lining (for all-caps setting) and old-style (for lowercase setting). In Adobe Illustrator, proportional figure styles are accessed via the OpenType panel, selecting either **Proportional Lining** or **Proportional Oldstyle** from the Figure drop-down menu. In Adobe InDesign, figure styles are accessed via the character panel, selecting **OpenType > Proportional Lining** or **OpenType > Proportional Oldstyle**.

Standard Character Set | 36pt Size | 42pt Leading

The current airline was established in 1954, started operations on 21 September 1955, and was placed under the control of the Civil Aviation Administration of Korea. CAAK began operations with **Lisunov LI2**, **Antonov AN2** and **Ilyushin IL12** aircraft. **Ilyushin IL14** and **Ilyushin IL18** turboprops were added to the fleet in the 1960s.

Tabular Figures

Doctrine includes four figure styles. Tabular figures used for setting numbers in tables are available in lining (for all-caps setting) and old-style (for lowercase setting). In Adobe Illustrator, proportional figure styles are accessed via the OpenType panel, selecting either **Tabular Lining** or **Tabular Oldstyle** from the Figure drop-down menu. In Adobe InDesign, figure styles are accessed via the character panel, selecting **OpenType > Tabular Lining** or **OpenType > Tabular Oldstyle**.

Proportional Lining | 40pt Size | 48pt Leading

18297.69
54682.45
32561.07
67899.25
98742.53

Oldstyle Lining | 40pt Size | 48pt Leading

18297.69
54682.45
32561.07
67899.25
98742.53

Tabular Lining | 40pt Size | 48pt Leading

18297.69
54682.45
32561.07
67899.25
98742.53

Tabular Oldstyle | 40pt Size | 48pt Leading

18297.69
54682.45
32561.07
67899.25
98742.53

Tabular Figures

Doctrine includes four figure styles. Tabular figures used for setting numbers in tables are available in lining (for all-caps setting) and old-style (for lowercase setting). In Adobe Illustrator, proportional figure styles are accessed via the OpenType panel, selecting either **Tabular Lining** or **Tabular Oldstyle** from the Figure drop-down menu. In Adobe InDesign, figure styles are accessed via the character panel, selecting **OpenType > Tabular Lining** or **OpenType > Tabular Oldstyle**.

Proportional Lining | 9pt Size | 12pt Leading

CATEGORY A	0001	0002	0003	0004	0005	0006	0007	0008	0009001000110012	0000
CATEGORY B	0013	0014	0015	0016	0017	0018	0019	0020	0021002200230024	1111
CATEGORY C	0025	0026	0027	0028	0029	0030	0031	0032	0033003400350036	2222
CATEGORY D	0037	0038	0039	0040	0041	0042	0043	0044	0045004600470048	3333
CATEGORY E	0049	0050	0051	0052	0053	0054	0055	0056	0057005800590060	4444
CATEGORY F	0061	0062	0063	0064	0065	0066	0067	0068	0069007000710072	5555
CATEGORY G	0073	0074	0075	0076	0077	0078	0079	0080	0081008200830084	6666
CATEGORY H	0085	0086	0087	0088	0089	0090	0091	0092	0093009400950096	7777

Proportional Oldstyle | 9pt Size | 12pt Leading

CATEGORY A	0001	0002	0003	0004	0005	0006	0007	0008	0009001000110012	0000
CATEGORY B	0013	0014	0015	0016	0017	0018	0019	0020	0021002200230024	1111
CATEGORY C	0025	0026	0027	0028	0029	0030	0031	0032	0033003400350036	2222
CATEGORY D	0037	0038	0039	0040	0041	0042	0043	0044	0045004600470048	3333
CATEGORY E	0049	0050	0051	0052	0053	0054	0055	0056	0057005800590060	4444
CATEGORY F	0061	0062	0063	0064	0065	0066	0067	0068	0069007000710072	5555
CATEGORY G	0073	0074	0075	0076	0077	0078	0079	0080	0081008200830084	6666
CATEGORY H	0085	0086	0087	0088	0089	0090	0091	0092	0093009400950096	7777

Tabular Lining | 9pt Size | 12pt Leading

CATEGORY A	0001	0002	0003	0004	0005	0006	0007	0008	0009001000110012	0000
CATEGORY B	0013	0014	0015	0016	0017	0018	0019	0020	0021002200230024	1111
CATEGORY C	0025	0026	0027	0028	0029	0030	0031	0032	0033003400350036	2222
CATEGORY D	0037	0038	0039	0040	0041	0042	0043	0044	0045004600470048	3333
CATEGORY E	0049	0050	0051	0052	0053	0054	0055	0056	0057005800590060	4444
CATEGORY F	0061	0062	0063	0064	0065	0066	0067	0068	0069007000710072	5555
CATEGORY G	0073	0074	0075	0076	0077	0078	0079	0080	0081008200830084	6666
CATEGORY H	0085	0086	0087	0088	0089	0090	0091	0092	0093009400950096	7777

Tabular Oldstyle | 9pt Size | 12pt Leading

CATEGORY A	0001	0002	0003	0004	0005	0006	0007	0008	0009001000110012	0000
CATEGORY B	0013	0014	0015	0016	0017	0018	0019	0020	0021002200230024	1111
CATEGORY C	0025	0026	0027	0028	0029	0030	0031	0032	0033003400350036	2222
CATEGORY D	0037	0038	0039	0040	0041	0042	0043	0044	0045004600470048	3333
CATEGORY E	0049	0050	0051	0052	0053	0054	0055	0056	0057005800590060	4444
CATEGORY F	0061	0062	0063	0064	0065	0066	0067	0068	0069007000710072	5555
CATEGORY G	0073	0074	0075	0076	0077	0078	0079	0080	0081008200830084	6666
CATEGORY H	0085	0086	0087	0088	0089	0090	0091	0092	0093009400950096	7777

Doctrine Thin

Doctrine Thin

A A B C D E E F F G G H I I J

K K L M M N N O P P Q Q

R R S T + U V W X Y Y Z

a a b c d e e f f g g h h

i i j j k k l l m m n n o o p

q r r s t t u v w x y y z

o 0 1 1 2 2 3 3 4 4

5 5 6 6 7 7 8 8 9 9

∞ ¡ ¸ ? () { } [] √

∫ \$ ¢ † ‡ @ & & €

¥ £ f # ∂ Δ Π Σ

% ∞ ∫ ◊ ™ Ω ©

π ± ¼ ½ ¾ *

Doctrine Thin — Character Map

!	"	#	\$	%	&	&	'	()	*	+	,	-	.	/	0	0	o	o
1	1	1	1	2	2	2	2	3	3	3	3	4	4	4	4	5	5	5	5
6	6	6	6	7	7	7	7	8	8	8	8	9	9	9	9	:	:	<	=
>	?	@	A	A	B	C	D	E	E	F	F	G	G	H	I	U	I	J	K
K	L	M	M	N	N	O	P	P	Q	Q	R	R	S	T	+	Th	U	V	W
X	Y	Y	Z	[\]	^	_	`	a	a	b	c	ct	d	e	e	f	f
fb	ff	fh	fj	fk	fy	ffb	ffh	ffj	ffj	fi	fl	ffi	ffl	fhn	fl	fy	ffh	ffl	ffj
g	g	gi	gy	h	h	i	i	j	j	k	k	l	l	m	m	n	n	o	p
q	r	r	s	st	t	t	ty	tty	ty	ty	ty	u	v	w	x	y	y	z	{
}	~	ı	¢	£	α	¥	ı	§	¨	©	ª	«	¬	®	-	°	±	²	³
'	μ	¶	·	,	¹	º	»	¼	½	¾	¿	À	À	Á	Á	Â	Â	Ã	Ã
Ä	Ä	Å	Å	Æ	Ç	È	È	É	É	Ê	Ê	Ë	Ë	Ì	Ì	Í	Í	Î	Î
Ï	Ï	Ð	Ñ	Ñ	Ò	Ó	Ô	Õ	Ö	×	Ø	Ù	Ú	Û	Ü	Ý	Ý	Þ	ß
à	à	á	á	â	â	ã	ã	ä	ä	å	å	æ	ç	è	è	é	é	ê	ê
ë	ë	ì	í	î	ï	ð	ñ	ñ	ò	ó	ô	õ	ö	÷	ø	ù	ú	û	ü
ý	ý	þ	ÿ	ÿ	Ā	Ā	ā	ā	Ă	Ă	ă	ă	Ą	Ą	ą	ą	Ć	ć	Ĉ
ĉ	Ĉ	ċ	Č	č	Ď	ď	Đ	đ	Ē	Ē	ē	ē	Ĕ	Ĕ	ě	ě	Ė	Ė	è
é	Ę	Ę	ę	ę	Ě	Ě	ě	ě	Ĝ	Ĝ	ĝ	ĝ	Ğ	Ğ	ğ	ğ	Ġ	Ġ	ğ
ğ	Ģ	Ģ	ģ	ģ	Ĥ	ĥ	ĥ	Ħ	ħ	ħ	İ	İ	ı	Ī	Ī	ī	Ĵ	Ĵ	ı
ĵ	Ĭ	Ĭ	ı	Ĵ	ĵ	Ķ	Ķ	ķ	ķ	κ	Ĺ	ĺ	ĺ	Ł	ł	ł	Ł	ł	ł
Ł	ł	ł	ł	ł	ł	Ń	Ń	ń	ń	Ņ	Ņ	ņ	ņ	Ň	Ň	ň	ň	Ŋ	ŋ
Ō	ō	Ŏ	ŏ	Œ	œ	Ŕ	Ŕ	ŗ	ŗ	Ŗ	Ŗ	ŗ	ŗ	Ř	Ř	ř	ř	Ś	ś
Ŝ	ŝ	Ş	ş	Š	š	Ţ	ţ	ţ	ţ	Ť	ť	ť	ť	Ŧ	†	‡	‡	Ũ	ũ
Ū	ū	Ŭ	ŭ	Ű	ű	Ų	ų	Ų	ų	ÿ	ÿ	Ž	ž	Ž	ž	Ž	ž	ƒ	f
Æ	æ	Ş	ş	Ţ	ţ	ţ	ţ	ˆ	˘	˘	˙	˚	˛	˜	˝	π	-	—	‘
’	,	“	”	„	†	‡	•	…	‰	<	>	/	€	™	Ω	∂	Δ	Π	Σ
-	√	∞	∫	≈	≠	≤	≥	◇	,	,	’	˘	˘	˘	ˆ	¨	˘	-	°
˘	-	˙	˝	˝	˝	˝	˝	˝	˝	˝	˝	˝	˝	˝	˝	˝	˝	˝	˝

Visiting North Korea can be challenging, and you will not have the freedom to explore the country without a North Korean escort, either as part of a group or individual tour. Citizens of South Korea are normally not permitted

Visiting North Korea can be challenging, and you will not have the freedom to explore the country without a North Korean escort, either as part of a group or individual tour. Citizens of South Korea are normally not permitted to visit North Korea. In addition, there have been reports of difficulties regarding Israeli, American, British, and Japanese nationals. In January 2010, North Korea lifted the restrictions on American citizens who are now free to visit at any time of the

Visiting North Korea can be challenging, and you will not have the freedom to explore the country without a North Korean escort, either as part of a group or individual tour. Citizens of South Korea are normally not permitted to visit North Korea. In addition, there have been reports of difficulties regarding Israeli, American, British, and Japanese nationals. In January 2010, North Korea lifted the restrictions on American citizens who are now free to visit at any time of the year – but they are not allowed to travel by train (especially the train to Beijing) or to participate in homestay-programs (Choson Exchange and The Pyongyang Project are able to bring Americans into the country by train). Contrary to rumour, Israelis and Jewish citizens of other countries do not face any additional restrictions. Citizens of all countries (except Malaysian passport holders entering for 30 days or less for official, business or tour

Visiting North Korea can be challenging, and you will not have the freedom to explore the country without a North Korean escort, either as part of a group or individual tour. Citizens of South Korea are normally not permitted to visit North Korea. In addition, there have been reports of dif-

Visiting North Korea can be challenging, and you will not have the freedom to explore the country without a North Korean escort, either as part of a group or individual tour. Citizens of South Korea are normally not permitted to visit North Korea. In addition, there have been reports of difficulties regarding Israeli, American, British, and Japanese nationals. In January 2010, North Korea lifted the restrictions on American citizens who are now free to visit at any time of the year – but they are not allowed to travel by train (especially the train to Beijing) or to

Visiting North Korea can be challenging, and you will not have the freedom to explore the country without a North Korean escort, either as part of a group or individual tour. Citizens of South Korea are normally not permitted to visit North Korea. In addition, there have been reports of difficulties regarding Israeli, American, British, and Japanese nationals. In January 2010, North Korea lifted the restrictions on American citizens who are now free to visit at any time of the year – but they are not allowed to travel by train (especially the train to Beijing) or to participate in homestay-programs (Choson Exchange and The Pyongyang Project are able to bring Americans into the country by train). Contrary to rumour, Israelis and Jewish citizens of other countries do not face any additional restrictions. Citizens of all countries (except Malaysian passport holders entering for 30 days or less for official, business or tour purposes who have already acquired documentation at the DPRK Embassy in Kuala Lumpur showing, North Korean business counterparts or tour and travel agency arrangements) will need a visa, which will only be issued after your tour has been booked, approved by the North Korean authorities and paid for. Journalists (or those suspected of being journalists) require special permission, which

Visiting North Korea can be challenging, and you will not have the freedom to explore the country without a North Korean escort, either as part of a group or individual tour. Citizens of South Korea are normally not permitted to visit North Korea. In addition, there have been reports of difficulties regarding Israeli, American, British, and Japanese nationals. In January 2010, North Korea lifted the

Visiting North Korea can be challenging, and you will not have the freedom to explore the country without a North Korean escort, either as part of a group or individual tour. Citizens of South Korea are normally not permitted to visit North Korea. In addition, there have been reports of difficulties regarding Israeli, American, British, and Japanese nationals. In January 2010, North Korea lifted the restrictions on American citizens who are now free to visit at any time of the year – but they are not allowed to travel by train (especially the train to Beijing) or to participate in homestay-programs (Choson Exchange and The Pyongyang Project are able to bring Americans into the country by train).

Visiting North Korea can be challenging, and you will not have the freedom to explore the country without a North Korean escort, either as part of a group or individual tour. Citizens of South Korea are normally not permitted to visit North Korea. In addition, there have been reports of difficulties regarding Israeli, American, British, and Japanese nationals. In January 2010, North Korea lifted the restrictions on American citizens who are now free to visit at any time of the year – but they are not allowed to travel by train (especially the train to Beijing) or to participate in homestay-programs (Choson Exchange and The Pyongyang Project are able to bring Americans into the country by train). Contrary to rumour, Israelis and Jewish citizens of other countries do not face any additional restrictions. Citizens of all countries (except Malaysian passport holders entering for 30 days or less for official, business or tour purposes who have already acquired documentation at the DPRK Embassy in Kuala Lumpur showing, North Korean business counterparts or tour and travel agency arrangements) will need a visa, which will only be issued after your tour has been booked, approved by the North Korean authorities and paid for. Journalists (or those suspected of being journalists) require special permission, which is quite difficult to obtain. The North Koreans do not allow journalists to visit the country on tourist visas. A specialist North Korean travel agency can help you sort out the complex and ever-changing regulations. North Korea will rarely in practice refuse a visa to a tourist who meets the various

Visiting North Korea can be challenging, and you will not have the freedom to explore the country without a North Korean escort, either as part of a group or individual tour. Citizens of South Korea are normally not permitted to visit North Korea. In addition, there have been reports of difficulties regarding Israeli, American, British, and Japanese nationals. In January 2010, North Korea lifted the restrictions on American citizens who are now free to visit at any time of the year – but they are not allowed to travel by train (especially the train to Beijing) or to participate in homestay-programs (Choson Exchange and The Pyongyang Project are able to bring Americans into the country by train). Contrary to rumour, Israelis and Jewish citizens of other countries do not face any additional restrictions. Citizens of all countries (except Malaysian passport holders entering for 30 days or less for official, business or tour purposes who have already acquired documentation at the DPRK Embassy in Kuala Lumpur showing, North Korean business counterparts or tour and travel agency arrangements) will need a visa, which will only be issued after your tour has been booked, approved by the North Korean

Doctrine Light

A A B C D E E F F G G H I I J

K K L M M N N O P P Q Q

R R S T + U V W X Y Y Z

a a b c d e e f f g g h h

i i j j k k l l m m n n o o p

q r r s t t u v w x y y z

o 0 1 1 2 2 3 3 4 4

5 5 6 6 7 7 8 8 9 9

∞ ¡ ¸ ? () {} [] √

∫ \$ ¢ † ‡ @ & & €

¥ £ f # ∂ Δ Π Σ

% ∞ ∫ ◊ ™ Ω ©

π ± ¼ ½ ¾ *

Doctrine Light — Character Map

!	"	#	\$	%	&	&	'	()	*	+	,	-	.	/	0	0	o	o
1	1	1	1	2	2	2	2	3	3	3	3	4	4	4	4	5	5	5	5
6	6	6	6	7	7	7	7	8	8	8	8	9	9	9	9	:	:	<	=
>	?	@	A	A	B	C	D	E	E	F	F	G	G	H	I	U	I	J	K
K	L	M	M	N	N	O	P	P	Q	Q	R	R	S	T	+	Th	U	V	W
X	Y	Y	Z	[\]	^	_	`	a	a	b	c	ct	d	e	e	f	f
fb	ff	fh	fj	fk	fy	ffb	ffh	ffj	ffj	fi	fl	ffi	ffl	fhn	fl	fy	ffh	ffl	ffj
g	g	gi	gy	h	h	i	i	j	j	k	k	l	l	m	m	n	n	o	p
q	r	r	s	st	t	t	ty	tty	ty	tty	u	v	w	x	y	y	z	{	
}	~	i	¢	£	¤	¥		§	¨	©	ª	«	¬	®	-	°	±	²	³
´	µ	¶	·	,	¹	º	»	¼	½	¾	¿	À	À	Á	Á	Â	Â	Ã	Ã
Ä	Ä	Å	Å	Æ	Ç	È	È	É	É	Ê	Ê	Ë	Ë	Ì	Ì	Í	Í	Î	Î
Ï	Ï	Ð	Ñ	Ñ	Ò	Ó	Ô	Õ	Ö	×	Ø	Ù	Ú	Û	Ü	Ý	Ý	Þ	ß
à	à	á	á	â	â	ã	ã	ä	ä	å	å	æ	ç	è	è	é	é	ê	ê
ë	ë	ì	í	î	ï	ð	ñ	ñ	ò	ó	ô	õ	ö	÷	ø	ù	ú	û	ü
ý	ý	þ	ÿ	ÿ	Ā	Ā	ā	ā	Ă	Ă	ă	ă	Ą	Ą	ą	ą	Ć	ć	Ĉ
ĉ	Ĉ	ċ	Č	č	Ď	ď	Đ	đ	Ē	Ē	ē	ē	Ĕ	Ĕ	ě	ě	Ė	ė	è
é	Ę	Ę	ę	ę	Ě	ě	ě	ě	Ĝ	Ĝ	ĝ	ĝ	Ğ	Ğ	ğ	ğ	Ġ	Ġ	ğ
ğ	Ģ	Ģ	ģ	ģ	Ĥ	ĥ	ĥ	Ħ	ħ	ħ	Ĩ	ĩ	ĩ	Ī	ī	ī	Ĵ	ĵ	ĵ
ĵ	İ	ı	ı	Ĵ	ĵ	Ķ	ķ	ķ	ķ	κ	Í	í	í	Ĺ	ĺ	ĺ	Ł	ł	ł
Ł	ł	ł	ł	ł	ł	Ń	ń	ń	ń	Ń	Ń	ņ	ņ	Ņ	ņ	ņ	ņ	Ŋ	ŋ
Ō	ō	Ŏ	ő	Œ	œ	Ŕ	ŕ	ŕ	ŕ	Ŕ	ŕ	ŕ	ŕ	Ř	ř	ř	ř	Ś	ś
Ŝ	ŝ	Ş	ş	Š	š	Ţ	ţ	ţ	ţ	Ť	ť	ť	ť	Ŧ	†	†	†	Ũ	ũ
Ū	ū	Ŭ	ŭ	Ű	ű	Ų	ų	ų	ų	ÿ	ÿ	Ż	ż	Ż	ż	Ż	ż	ƒ	f
Æ	æ	Ş	ş	Ţ	ţ	ţ	ţ	ˆ	˘	˘	˙	˚	¸	˜	˝	π	-	—	‘
’	,	“	”	„	†	‡	•	…	‰	<	>	/	€	™	Ω	∂	Δ	Π	Σ
-	√	∞	∫	≈	≠	≤	≥	◇	,	,	’	˘	˘	˘	ˆ	¨	˘	-	°
˘	-	˘	˘	˘	˘	˘	˘	˘	˘	˘	˘	˘	˘	˘	˘	˘	˘	˘	˘

Visiting North Korea can be challenging, and you will not have the freedom to explore the country without a North Korean escort, either as part of a group or individual tour. Citizens of South Korea are normally not permitted

Visiting North Korea can be challenging, and you will not have the freedom to explore the country without a North Korean escort, either as part of a group or individual tour. Citizens of South Korea are normally not permitted to visit North Korea. In addition, there have been reports of difficulties regarding Israeli, American, British, and Japanese nationals. In January 2010, North Korea lifted the restrictions on American citizens who are now free to visit

Visiting North Korea can be challenging, and you will not have the freedom to explore the country without a North Korean escort, either as part of a group or individual tour. Citizens of South Korea are normally not permitted to visit North Korea. In addition, there have been reports of difficulties regarding Israeli, American, British, and Japanese nationals. In January 2010, North Korea lifted the restrictions on American citizens who are now free to visit at any time of the year – but they are not allowed to travel by train (especially the train to Beijing) or to participate in homestay-programs (Choson Exchange and The Pyongyang Project are able to bring Americans into the country by train). Contrary to rumour, Israelis and Jewish citizens of other countries do not face any additional restrictions. Citizens of all countries (except Malaysian passport holders entering for 30 days

Visiting North Korea can be challenging, and you will not have the freedom to explore the country without a North Korean escort, either as part of a group or individual tour. Citizens of South Korea are normally not permitted to visit North Korea. In addition, there have been reports of dif-

Visiting North Korea can be challenging, and you will not have the freedom to explore the country without a North Korean escort, either as part of a group or individual tour. Citizens of South Korea are normally not permitted to visit North Korea. In addition, there have been reports of difficulties regarding Israeli, American, British, and Japanese nationals. In January 2010, North Korea lifted the restrictions on American citizens who are now free to visit at any time of the year – but they are not allowed to travel by train (especially the train to Beijing) or

Visiting North Korea can be challenging, and you will not have the freedom to explore the country without a North Korean escort, either as part of a group or individual tour. Citizens of South Korea are normally not permitted to visit North Korea. In addition, there have been reports of difficulties regarding Israeli, American, British, and Japanese nationals. In January 2010, North Korea lifted the restrictions on American citizens who are now free to visit at any time of the year – but they are not allowed to travel by train (especially the train to Beijing) or to participate in homestay-programs (Choson Exchange and The Pyongyang Project are able to bring Americans into the country by train). Contrary to rumour, Israelis and Jewish citizens of other countries do not face any additional restrictions. Citizens of all countries (except Malaysian passport holders entering for 30 days or less for official, business or tour purposes who have already acquired documentation at the DPRK Embassy in Kuala Lumpur showing, North Korean business counterparts or tour and travel agency arrangements) will need a visa, which will only be issued after your tour has been booked, approved by the North Korean authorities and paid for. Journalists (or those suspected of being

Visiting North Korea can be challenging, and you will not have the freedom to explore the country without a North Korean escort, either as part of a group or individual tour. Citizens of South Korea are normally not permitted to visit North Korea. In addition, there have been reports of difficulties regarding Israeli, American, British, and Japanese nationals. In January 2010, North Korea lifted the

Visiting North Korea can be challenging, and you will not have the freedom to explore the country without a North Korean escort, either as part of a group or individual tour. Citizens of South Korea are normally not permitted to visit North Korea. In addition, there have been reports of difficulties regarding Israeli, American, British, and Japanese nationals. In January 2010, North Korea lifted the restrictions on American citizens who are now free to visit at any time of the year – but they are not allowed to travel by train (especially the train to Beijing) or to participate in homestay-programs (Choson Exchange and The Pyongyang Project are able to bring Americans into the country

Visiting North Korea can be challenging, and you will not have the freedom to explore the country without a North Korean escort, either as part of a group or individual tour. Citizens of South Korea are normally not permitted to visit North Korea. In addition, there have been reports of difficulties regarding Israeli, American, British, and Japanese nationals. In January 2010, North Korea lifted the restrictions on American citizens who are now free to visit at any time of the year – but they are not allowed to travel by train (especially the train to Beijing) or to participate in homestay-programs (Choson Exchange and The Pyongyang Project are able to bring Americans into the country by train). Contrary to rumour, Israelis and Jewish citizens of other countries do not face any additional restrictions. Citizens of all countries (except Malaysian passport holders entering for 30 days or less for official, business or tour purposes who have already acquired documentation at the DPRK Embassy in Kuala Lumpur showing, North Korean business counterparts or tour and travel agency arrangements) will need a visa, which will only be issued after your tour has been booked, approved by the North Korean authorities and paid for. Journalists (or those suspected of being journalists) require special permission, which is quite difficult to obtain. The North Koreans do not allow journalists to visit the country on tourist visas. A specialist North Korean travel agency can help you sort out the complex and ever-changing regulations. North Korea will rarely in practice

Visiting North Korea can be challenging, and you will not have the freedom to explore the country without a North Korean escort, either as part of a group or individual tour. Citizens of South Korea are normally not permitted to visit North Korea. In addition, there have been reports of difficulties regarding Israeli, American, British, and Japanese nationals. In January 2010, North Korea lifted the restrictions on American citizens who are now free to visit at any time of the year – but they are not allowed to travel by train (especially the train to Beijing) or to participate in homestay-programs (Choson Exchange and The Pyongyang Project are able to bring Americans into the country by train). Contrary to rumour, Israelis and Jewish citizens of other countries do not face any additional restrictions. Citizens of all countries (except Malaysian passport holders entering for 30 days or less for official, business or tour purposes who have already acquired documentation at the DPRK Embassy in Kuala Lumpur showing, North Korean business counterparts or tour and travel agency arrangements) will need a visa, which will only be issued after your tour has been booked, approved

Doctrine Regular

A A B C D E E F F G G H I I J

K K L M M N N O P P Q Q

R R S T + U V W X Y Y Z

a a b c d e e f f g g h h

i i j j k k l l m m n n o o p

q r r s t t u v w x y y z

o 0 1 1 2 2 3 3 4 4

5 5 6 6 7 7 8 8 9 9

∞ ¡ ¸ ? () { } [] √

∫ \$ ¢ † ‡ @ & & €

¥ £ f # ∂ Δ Π Σ

% ∞ ∫ ◊ ™ Ω ©

π ± ¼ ½ ¾ *

Doctrine Regular — Character Map

!	"	#	\$	%	&	&	'	()	*	+	,	-	.	/	0	0	o	o
1	1	1	1	2	2	2	2	3	3	3	3	4	4	4	4	5	5	5	5
6	6	6	6	7	7	7	7	8	8	8	8	9	9	9	9	:	:	<	=
>	?	@	A	A	B	C	D	E	E	F	F	G	G	H	I	U	I	J	K
K	L	M	M	N	N	O	P	P	Q	Q	R	R	S	T	+	Th	U	V	W
X	Y	Y	Z	[\]	^	_	`	a	a	b	c	ct	d	e	e	f	f
fb	ff	fh	fj	fk	fy	ffb	ffh	ffj	ffj	fi	fl	ffi	ffl	fhn	fl	fy	ffh	ffl	ffj
g	g	gi	gy	h	h	i	i	j	j	k	k	l	l	m	m	n	n	o	p
q	r	r	s	st	t	t	ty	tty	ty	tty	u	v	w	x	y	y	z	{	
}	~	i	¢	£	¤	¥		§	¨	©	ª	«	¬	®	-	°	±	²	³
´	µ	¶	·	,	¹	º	»	¼	½	¾	¿	À	À	Á	Á	Â	Â	Ã	Ã
Ä	Ä	Å	Å	Æ	Ç	È	È	É	É	Ê	Ê	Ë	Ë	Ì	Ì	Í	Í	Î	Î
Ï	Ï	Ð	Ñ	Ñ	Ò	Ó	Ô	Õ	Ö	×	Ø	Ù	Ú	Û	Ü	Ý	Ý	Þ	ß
à	à	á	á	â	â	ã	ã	ä	ä	å	å	æ	ç	è	è	é	é	ê	ê
ë	ë	ì	í	î	ï	ð	ñ	ñ	ò	ó	ô	õ	ö	÷	ø	ù	ú	û	ü
ý	ý	þ	ÿ	ÿ	Ā	Ā	ā	ā	Ă	Ă	ă	ă	Ą	Ą	ą	ą	Ć	ć	Ĉ
ĉ	Ĉ	ĉ	Č	č	Ď	ď	Đ	đ	Ē	Ē	ē	ē	Ĕ	Ĕ	ě	ě	È	È	é
è	È	È	ę	ę	Ě	Ě	ě	ě	Ĝ	Ĝ	ĝ	ĝ	Ğ	Ğ	ğ	ğ	Ġ	Ġ	ğ
ğ	Ģ	Ģ	ğ	ğ	Ĥ	ĥ	ĥ	Ħ	ħ	ħ	İ	İ	ı	Ī	Ī	ī	Ĵ	Ĵ	ı
ĵ	Ĭ	Ĭ	ı	Ĵ	ĵ	Ķ	Ķ	ķ	ķ	κ	Ĺ	ĺ	ĺ	Ł	ł	ł	Ł	ł	ł
Ł	ł	ł	ł	ł	ł	Ń	Ń	ń	ń	Ņ	Ņ	ņ	ņ	Ň	Ň	ň	ň	Ŋ	ŋ
Ō	ō	Ŏ	ŏ	Œ	œ	Ŕ	Ŕ	ŗ	ŗ	Ŗ	Ŗ	ŗ	ŗ	Ř	Ř	ř	ř	Ś	ś
Ŝ	ŝ	Ş	ş	Š	š	Ţ	ţ	ţ	ţ	Ť	ť	ť	ť	Ŧ	†	†	†	Ũ	ũ
Ū	ū	Ŭ	ŭ	Ű	ű	Ų	ų	ų	ų	Ÿ	ÿ	Ż	ż	Ž	ž	ž	ž	Ź	ź
Ž	ž	Ş	ş	Ţ	ţ	ţ	ţ	ˆ	˘	˘	˙	˚	¸	˜	˝	π	-	-	´
´	,	“	”	„	†	†	•	...	‰	<	>	/	€	™	Ω	∂	Δ	Π	Σ
-	√	∞	∫	≈	≠	≤	≥	◊	,	,	´	˘	˘	˘	ˆ	¨	˘	-	°
˘	-	˘	˝	˝	˝	˝	˝	˝	˝	˝	˝	˝	˝	˝	˝	˝	˝	˝	˝

Visiting North Korea can be challenging, and you will not have the freedom to explore the country without a North Korean escort, either as part of a group or individual tour. Citizens of South Korea are normally

Visiting North Korea can be challenging, and you will not have the freedom to explore the country without a North Korean escort, either as part of a group or individual tour. Citizens of South Korea are normally not permitted to visit North Korea. In addition, there have been reports of difficulties regarding Israeli, American, British, and Japanese nationals. In January 2010, North Korea lifted the restrictions on American citizens who are now

Visiting North Korea can be challenging, and you will not have the freedom to explore the country without a North Korean escort, either as part of a group or individual tour. Citizens of South Korea are normally not permitted to visit North Korea. In addition, there have been reports of difficulties regarding Israeli, American, British, and Japanese nationals. In January 2010, North Korea lifted the restrictions on American citizens who are now free to visit at any time of the year – but they are not allowed to travel by train (especially the train to Beijing) or to participate in homestay-programs (Choson Exchange and The Pyongyang Project are able to bring Americans into the country by train). Contrary to rumour, Israelis and Jewish citizens of other countries do not face any additional restrictions. Citizens of all countries (except Malaysian passport

Visiting North Korea can be challenging, and you will not have the freedom to explore the country without a North Korean escort, either as part of a group or individual tour. Citizens of South Korea are normally not permitted to visit North Korea. In addition, there have

Visiting North Korea can be challenging, and you will not have the freedom to explore the country without a North Korean escort, either as part of a group or individual tour. Citizens of South Korea are normally not permitted to visit North Korea. In addition, there have been reports of difficulties regarding Israeli, American, British, and Japanese nationals. In January 2010, North Korea lifted the restrictions on American citizens who are now free to visit at any time of the year – but they are not allowed to travel by train (especially the train

Visiting North Korea can be challenging, and you will not have the freedom to explore the country without a North Korean escort, either as part of a group or individual tour. Citizens of South Korea are normally not permitted to visit North Korea. In addition, there have been reports of difficulties regarding Israeli, American, British, and Japanese nationals. In January 2010, North Korea lifted the restrictions on American citizens who are now free to visit at any time of the year – but they are not allowed to travel by train (especially the train to Beijing) or to participate in homestay-programs (Choson Exchange and The Pyongyang Project are able to bring Americans into the country by train). Contrary to rumour, Israelis and Jewish citizens of other countries do not face any additional restrictions. Citizens of all countries (except Malaysian passport holders entering for 30 days or less for official, business or tour purposes who have already acquired documentation at the DPRK Embassy in Kuala Lumpur showing, North Korean business counterparts or tour and travel agency arrangements) will need a visa, which will only be issued after your tour has been booked, approved by the North Korean authorities and

Visiting North Korea can be challenging, and you will not have the freedom to explore the country without a North Korean escort, either as part of a group or individual tour. Citizens of South Korea are normally not permitted to visit North Korea. In addition, there have been reports of difficulties regarding Israeli, American, British, and Japanese nationals. In January 2010,

Visiting North Korea can be challenging, and you will not have the freedom to explore the country without a North Korean escort, either as part of a group or individual tour. Citizens of South Korea are normally not permitted to visit North Korea. In addition, there have been reports of difficulties regarding Israeli, American, British, and Japanese nationals. In January 2010, North Korea lifted the restrictions on American citizens who are now free to visit at any time of the year – but they are not allowed to travel by train (especially the train to Beijing) or to participate in homestay-programs (Choson Exchange and The Pyongyang Project are able to bring

Visiting North Korea can be challenging, and you will not have the freedom to explore the country without a North Korean escort, either as part of a group or individual tour. Citizens of South Korea are normally not permitted to visit North Korea. In addition, there have been reports of difficulties regarding Israeli, American, British, and Japanese nationals. In January 2010, North Korea lifted the restrictions on American citizens who are now free to visit at any time of the year – but they are not allowed to travel by train (especially the train to Beijing) or to participate in homestay-programs (Choson Exchange and The Pyongyang Project are able to bring Americans into the country by train). Contrary to rumour, Israelis and Jewish citizens of other countries do not face any additional restrictions. Citizens of all countries (except Malaysian passport holders entering for 30 days or less for official, business or tour purposes who have already acquired documentation at the DPRK Embassy in Kuala Lumpur showing, North Korean business counterparts or tour and travel agency arrangements) will need a visa, which will only be issued after your tour has been booked, approved by the North Korean authorities and paid for. Journalists (or those suspected of being journalists) require special permission, which is quite difficult to obtain. The North Koreans do not allow journalists to visit the country on tourist visas. A specialist North Korean travel agency can help you sort out the complex and ever-changing regulations.

Visiting North Korea can be challenging, and you will not have the freedom to explore the country without a North Korean escort, either as part of a group or individual tour. Citizens of South Korea are normally not permitted to visit North Korea. In addition, there have been reports of difficulties regarding Israeli, American, British, and Japanese nationals. In January 2010, North Korea lifted the restrictions on American citizens who are now free to visit at any time of the year – but they are not allowed to travel by train (especially the train to Beijing) or to participate in homestay-programs (Choson Exchange and The Pyongyang Project are able to bring Americans into the country by train). Contrary to rumour, Israelis and Jewish citizens of other countries do not face any additional restrictions. Citizens of all countries (except Malaysian passport holders entering for 30 days or less for official, business or tour purposes who have already acquired documentation at the DPRK Embassy in Kuala Lumpur showing, North Korean business counterparts or tour and travel agency arrangements) will need a visa, which will only be issued

Doctrine

Bold

A A B C D E E F F G G H I I J

K K L M M N N O P P Q Q

R R S T + U V W X Y Y Z

a a b c d e e f f g g h h

i i j j k k l l m m n n o o p

q r r s t t u v w x y y z

o 0 1 1 2 2 3 3 4 4

5 5 6 6 7 7 8 8 9 9

∞ ¡ ¸ ? () {} [] √

∫ \$ ¢ † ‡ @ & & €

¥ £ f # ∂ Δ Π Σ

% ∞ ∫ ◊ ™ Ω ©

π ± ¼ ½ ¾ *

**••
••••••••••••••••••**

Doctrine Bold — Character Map

!	"	#	\$	%	&	&	'	()	*	+	,	-	.	/	0	0	o	o
1	1	1	1	2	2	2	2	3	3	3	3	4	4	4	4	5	5	5	5
6	6	6	6	7	7	7	7	8	8	8	8	9	9	9	9	:	:	<	=
>	?	@	A	A	B	C	D	E	E	F	F	G	G	H	I	U	I	J	K
K	L	M	M	N	N	O	P	P	Q	Q	R	R	S	T	+	Th	U	V	W
X	Y	Y	Z	[\]	^	_	`	a	a	b	c	ct	d	e	e	f	f
fb	ff	fh	fj	fk	fy	ffb	ffh	ffj	ffj	fi	fl	ffi	ffl	fhn	fl	fy	ffh	ffl	ffj
g	g	gi	gy	h	h	i	i	j	j	k	k	l	l	m	m	n	n	o	p
q	r	r	s	st	t	t	ty	tty	ty	tty	u	v	w	x	y	y	z	{	
}	~	i	¢	£	¤	¥	¦	§	¨	©	ª	«	¬	®	¯	°	±	²	³
´	µ	¶	·	,	'	°	»	¼	½	¾	¿	À	À	Á	Á	Â	Â	Ã	Ã
Ä	Ä	Å	Å	Æ	Ç	È	È	É	É	Ê	Ê	Ë	Ë	Ì	Ì	Í	Í	Î	Î
Ï	Ï	Ð	Ñ	Ñ	Ò	Ó	Ô	Õ	Ö	×	Ø	Ù	Ú	Û	Ü	Ý	Ý	Þ	ß
à	à	á	á	â	â	ã	ã	ä	ä	å	å	æ	ç	è	è	é	é	ê	ê
ë	ë	ì	í	î	ï	ð	ñ	ñ	ò	ó	ô	õ	ö	÷	ø	ù	ú	û	ü
ý	ý	þ	ÿ	ÿ	Ā	Ā	ā	ā	Ă	Ă	ă	ă	Ą	Ą	ą	ą	Ć	ć	Ĉ
ĉ	Ĉ	ċ	Č	č	Ď	ď	Đ	đ	Ē	Ē	ē	ē	Ĕ	Ĕ	ě	ě	È	È	é
è	È	Ę	ę	ę	Ě	ě	ě	ě	Ĝ	Ĝ	ĝ	ĝ	Ğ	Ğ	ğ	ğ	Ġ	Ġ	ğ
ġ	Ġ	Ģ	ģ	ģ	Ĥ	ĥ	ĥ	Ħ	ħ	ħ	Ĩ	ĩ	ĩ	Ī	ī	ī	Ĵ	ĵ	ĵ
ĵ	Ķ	ķ	ķ	ķ	Ķ	ķ	ķ	ķ	κ	κ	Í	í	í	Ĺ	ĺ	ĺ	Ľ	ľ	ľ
Ł	ł	ł	Ł	ł	ł	Ń	ń	ń	ń	Ń	ń	ņ	ņ	Ņ	ņ	ņ	ņ	Ŋ	ŋ
Ō	ō	Ŏ	ő	Œ	œ	Ŕ	ŕ	ŕ	ŕ	Ŕ	ŕ	ŕ	ŕ	Ř	ř	ř	ř	Ś	ś
Ŝ	ŝ	Ş	ş	Š	š	Ţ	ţ	ţ	ţ	Ť	ť	ť	ť	Ŧ	†	†	†	Ũ	ũ
Ū	ū	Ŭ	ŭ	Ű	ű	Ű	ű	Ű	ű	Ÿ	ÿ	Ž	ž	Ž	ž	ž	ž	ƒ	f
Ă	ă	Ş	ş	Ţ	ţ	ţ	ţ	ˆ	˘	˘	˙	˚	¸	˜	˝	π	-	-	´
¸	,	“	”	„	†	‡	•	…	‰	<	>	/	€	™	Ω	∂	Δ	Π	Σ
-	√	∞	∫	≈	≠	≤	≥	◊	,	,	˘	˘	˘	˘	˘	˘	˘	˘	˘
˘	-	·	˘	˘	˘	˘	˘	˘	˘	˘	˘	˘	˘	˘	˘	˘	˘	˘	˘
					˘	˘	˘	˘	˘	˘	˘	˘	˘	˘	˘	˘	˘	˘	˘

Visiting North Korea can be challenging, and you will not have the freedom to explore the country without a North Korean escort, either as part of a group or individual tour. Citizens of South

Visiting North Korea can be challenging, and you will not have the freedom to explore the country without a North Korean escort, either as part of a group or individual tour. Citizens of South Korea are normally not permitted to visit North Korea. In addition, there have

Visiting North Korea can be challenging, and you will not have the freedom to explore the country without a North Korean escort, either as part of a group or individual tour. Citizens of South Korea are normally not permitted to visit North Korea. In addition, there have been reports of difficulties regarding Israeli, American, British, and Japanese nationals. In January

Visiting North Korea can be challenging, and you will not have the freedom to explore the country without a North Korean escort, either as part of a group or individual tour. Citizens of South Korea are normally not permitted to visit North Korea. In addition, there have been reports of difficulties regarding Israeli, American, British, and Japanese nationals. In January 2010, North Korea lifted the restrictions on American citi-

Visiting North Korea can be challenging, and you will not have the freedom to explore the country without a North Korean escort, either as part of a group or individual tour. Citizens of South Korea are normally not permitted to visit North Korea. In addition, there have been reports of difficulties regarding Israeli, American, British, and Japanese nationals. In January 2010, North Korea lifted the restrictions on American citizens who are now free to visit at any time of the year – but they are not allowed

Visiting North Korea can be challenging, and you will not have the freedom to explore the country without a North Korean escort, either as part of a group or individual tour. Citizens of South Korea are normally not permitted to visit North Korea. In addition, there have been reports of difficulties regarding Israeli, American, British, and Japanese nationals. In January 2010, North Korea lifted the restrictions on American citizens who are now free to visit at any time of the year – but they are not allowed to travel by train (especially the train to Beijing) or to participate in homestay-programs (Choson Exchange and The Pyongyang

Visiting North Korea can be challenging, and you will not have the freedom to explore the country without a North Korean escort, either as part of a group or individual tour. Citizens of South Korea are normally not permitted to visit North Korea. In addition, there have been reports of difficulties regarding Israeli, American, British, and Japanese nationals. In January 2010, North Korea lifted the restrictions on American citizens who are now free to visit at any time of the year – but they are not allowed to travel by train (especially the train to Beijing) or to participate in homestay-programs (Choson Exchange and The Pyongyang Project are able to bring Americans into the country by train). Contrary to rumour, Israelis and Jewish citizens of other countries do not face any additional restrictions. Citizens of

Visiting North Korea can be challenging, and you will not have the freedom to explore the country without a North Korean escort, either as part of a group or individual tour. Citizens of South Korea are normally not permitted to visit North Korea. In addition, there have been reports of difficulties regarding Israeli, American, British, and Japanese nationals. In January 2010, North Korea lifted the restrictions on American citizens who are now free to visit at any time of the year – but they are not allowed to travel by train (especially the train to Beijing) or to participate in homestay-programs (Choson Exchange and The Pyongyang Project are able to bring Americans into the country by train). Contrary to rumour, Israelis and Jewish citizens of other countries do not face any additional restrictions. Citizens of all countries (except Malaysian passport holders entering for 30 days or less for official, business or tour purposes who have already acquired documentation at the DPRK Embassy in Kuala Lumpur showing, North Korean business counterparts or tour and travel agency arrangements) will need a visa, which will only be issued after your tour has been booked, approved

Visiting North Korea can be challenging, and you will not have the freedom to explore the country without a North Korean escort, either as part of a group or individual tour. Citizens of South Korea are normally not permitted to visit North Korea. In addition, there have been reports of difficulties regarding Israeli, American, British, and Japanese nationals. In January 2010, North Korea lifted the restrictions on American citizens who are now free to visit at any time of the year – but they are not allowed to travel by train (especially the train to Beijing) or to participate in homestay-programs (Choson Exchange and The Pyongyang Project are able to bring Americans into the country by train). Contrary to rumour, Israelis and Jewish citizens of other countries do not face any additional restrictions. Citizens of all countries (except Malaysian passport holders entering for 30 days or less for official, business or tour purposes who have already acquired documentation at the DPRK Embassy in Kuala Lumpur showing, North Korean business counterparts or tour and travel agency arrangements) will need a visa, which will only be issued after your tour has been booked, approved by the North Korean authorities and paid for. Journalists (or those suspected of being journalists) require special permission, which is quite difficult to obtain. The North Koreans do not allow journalists to visit the country on tourist visas. A

Visiting North Korea can be challenging, and you will not have the freedom to explore the country without a North Korean escort, either as part of a group or individual tour. Citizens of South Korea are normally not permitted to visit North Korea. In addition, there have been reports of difficulties regarding Israeli, American, British, and Japanese nationals. In January 2010, North Korea lifted the restrictions on American citizens who are now free to visit at any time of the year – but they are not allowed to travel by train (especially the train to Beijing) or to participate in homestay-programs (Choson Exchange and The Pyongyang Project are able to bring Americans into the country by train). Contrary to rumour, Israelis and Jewish citizens of other countries do not face any additional restrictions. Citizens of all countries (except Malaysian passport holders entering for 30 days or less for official, business or tour purposes who have already acquired documentation at the DPRK Embassy in Kuala Lumpur showing, North Korean business counterparts or tour and

Doctrine Black

A A B C D E E F F G G H I I J

K K L M M N N O P P Q Q

R R S T + U V W X Y Y Z

a a b c d e e f f g g h h

i i j j k k l l m m n n o o p

q r r s t t u v w x y y z

o o 1 1 2 2 3 3 4 4

5 5 6 6 7 7 8 8 9 9

∞ ¡ ¢ ? () {} [] √

∫ \$ ¢ † ‡ @ & & €

¥ £ f # ∂ Δ Π Σ

% ∞ ∫ ◊ ™ Ω ©

π ± ¼ ½ ¾ *

Visiting North Korea can be challenging, and you will not have the freedom to explore the country without a North Korean escort, either as part of a group or individual tour. Citizens of South

Visiting North Korea can be challenging, and you will not have the freedom to explore the country without a North Korean escort, either as part of a group or individual tour. Citizens of South Korea are normally not permitted to visit North Korea. In addition, there have been reports of difficulties regarding Israeli, American, British, and Japanese nationals. In January 2010, North Korea lifted the restric-

Visiting North Korea can be challenging, and you will not have the freedom to explore the country without a North Korean escort, either as part of a group or individual tour. Citizens of South Korea are normally not permitted to visit North Korea. In addition, there have been reports of difficulties regarding Israeli, American, British, and Japanese nationals. In January 2010, North Korea lifted the restrictions on American citizens who are now free to visit at any time of the year – but they are not allowed to travel by train (especially the train to Beijing) or to participate in homestay-programs (Choson Exchange and The Pyongyang Project are able to bring Americans into the country by train). Contrary to rumour, Israelis and Jewish citizens of other countries do not face

Visiting North Korea can be challenging, and you will not have the freedom to explore the country without a North Korean escort, either as part of a group or individual tour. Citizens of South Korea are normally not permitted to visit North Korea. In

Visiting North Korea can be challenging, and you will not have the freedom to explore the country without a North Korean escort, either as part of a group or individual tour. Citizens of South Korea are normally not permitted to visit North Korea. In addition, there have been reports of difficulties regarding Israeli, American, British, and Japanese nationals. In January 2010, North Korea lifted the restrictions on American citizens who are now free to visit at any time of the year – but they

Visiting North Korea can be challenging, and you will not have the freedom to explore the country without a North Korean escort, either as part of a group or individual tour. Citizens of South Korea are normally not permitted to visit North Korea. In addition, there have been reports of difficulties regarding Israeli, American, British, and Japanese nationals. In January 2010, North Korea lifted the restrictions on American citizens who are now free to visit at any time of the year – but they are not allowed to travel by train (especially the train to Beijing) or to participate in homestay-programs (Choson Exchange and The Pyongyang Project are able to bring Americans into the country by train). Contrary to rumour, Israelis and Jewish citizens of other countries do not face any additional restrictions. Citizens of all countries (except Malaysian passport holders entering for 30 days or less for official, business or tour purposes who have already acquired documentation at the DPRK Embassy in Kuala Lumpur showing, North Korean business counterparts or tour and travel agency arrangements) will need a visa, which will only be issued after your tour

Visiting North Korea can be challenging, and you will not have the freedom to explore the country without a North Korean escort, either as part of a group or individual tour. Citizens of South Korea are normally not permitted to visit North Korea. In addition, there have been reports of difficulties regarding Israeli, American, British, and Japanese nationals. In

Visiting North Korea can be challenging, and you will not have the freedom to explore the country without a North Korean escort, either as part of a group or individual tour. Citizens of South Korea are normally not permitted to visit North Korea. In addition, there have been reports of difficulties regarding Israeli, American, British, and Japanese nationals. In January 2010, North Korea lifted the restrictions on American citizens who are now free to visit at any time of the year – but they are not allowed to travel by train (especially the train to Beijing) or to participate in homestay-programs (Choson Exchange and The Pyongyang

Visiting North Korea can be challenging, and you will not have the freedom to explore the country without a North Korean escort, either as part of a group or individual tour. Citizens of South Korea are normally not permitted to visit North Korea. In addition, there have been reports of difficulties regarding Israeli, American, British, and Japanese nationals. In January 2010, North Korea lifted the restrictions on American citizens who are now free to visit at any time of the year – but they are not allowed to travel by train (especially the train to Beijing) or to participate in homestay-programs (Choson Exchange and The Pyongyang Project are able to bring Americans into the country by train). Contrary to rumour, Israelis and Jewish citizens of other countries do not face any additional restrictions. Citizens of all countries (except Malaysian passport holders entering for 30 days or less for official, business or tour purposes who have already acquired documentation at the DPRK Embassy in Kuala Lumpur showing, North Korean business counterparts or tour and travel agency arrangements) will need a visa, which will only be issued after your tour has been booked, approved by the North Korean authorities and paid for. Journalists (or those suspected of being journalists) require special permission, which is quite difficult to obtain. The North Koreans do not allow journalists to visit the country on

Visiting North Korea can be challenging, and you will not have the freedom to explore the country without a North Korean escort, either as part of a group or individual tour. Citizens of South Korea are normally not permitted to visit North Korea. In addition, there have been reports of difficulties regarding Israeli, American, British, and Japanese nationals. In January 2010, North Korea lifted the restrictions on American citizens who are now free to visit at any time of the year – but they are not allowed to travel by train (especially the train to Beijing) or to participate in homestay-programs (Choson Exchange and The Pyongyang Project are able to bring Americans into the country by train). Contrary to rumour, Israelis and Jewish citizens of other countries do not face any additional restrictions. Citizens of all countries (except Malaysian passport holders entering for 30 days or less for official, business or tour purposes who have already acquired documentation at the DPRK Embassy in Kuala Lumpur showing, North Korean business counter-

Doctrine Family

DEMILITARISE
Insurbordinate
REGULATORAY
Governmentally
INCARCERATED
Re-interrogation
INSUPERVISION
Antidiseestablish
CLASSIFICATION
Authoritarianism

NORTH
NORTH
NORTH
NORTH
NORTH
NORTH

North Korea warns safety of British diplomats ‘cannot be guaranteed’

British diplomats in North Korea have been warned the government there cannot guarantee their safety after April 10 in the event of conflict, the Foreign Office has said.

The latest move comes amid spiralling tensions in the Korean peninsula. ¶ The Foreign Office says it is “**considering next steps**” after the North Korean regime asked if Britain is considering evacuating its embassy. ¶ On Thursday, David Cameron said he was “**very concerned**” about North Korea. ¶ The UK prime minister cited the nuclear threat posed by the regime led by Kim Jong-un as one of the reasons he is committed to maintaining a round the clock submarine-based nuclear missile system. ¶ As a result of the latest development, the Foreign Office says it is “**considering next steps**”, including the possibility of amending travel advice. ¶ But it warned North Korea that it had obligations under the international Vienna convention to protect diplomatic missions and claimed the move was an example of the “**continuing rhetoric**” against the United States. ¶ Anecdotal reports from inside the North Korean capital, Pyongyang, say the mood there is calm, and many believe North Korea is deliberately trying to create a sense of crisis, says the BBC's Lucy Williamson in Seoul.

NORTH KOREA occupies the northern portion of the Korean Peninsula, lying between latitudes 37° and 43°N, and longitudes 124° and 131°E. It covers an area of 120,540 square kilometres (46,541 sq mi). **NORTH KOREA** shares land borders with **CHINA** and **RUSSIA** to the north, and borders **SOUTH KOREA** along the Korean Demilitarized Zone. To its west are the Yellow Sea and Korea Bay, and to its east lies **JAPAN** across the Sea of **JAPAN** (East Sea of **KOREA**). The highest point in **NORTH KOREA** is Baekdu Mountain at 2,744 metres (9,003 ft). The longest river is the Amnok River which flows for 790 kilometres (491 mi).

The capital and largest city is **PYONGYANG**; other major cities include **KAESONG** in the south, **SINUIJU** in the northwest, **WONSAN** and **HAMHUNG** in the east and **CHONGJIN** in the northeast.

In 2013, internet users were encouraged to participate in a community based event on Google Maps. These users could use Google Map Maker along with Cartography and Telemetry skills that eventually led to a virtual map of **PYONGYANG**. In addition, the Google Map of **NORTH KOREA** includes political prison camp locations such as Camp 22.

LARGEST CITIES OR TOWNS OF NORTH KOREA

FIGURES FROM
NORTH KOREA
2008 CENSUS

RANK	CITY NAME	ADMINISTRATIVE DIVISION*	POPULATION
01	Pyongyang	Pyongyang Capital City	3,255,288
02	Hamhung	South Hamgyong Province	768,551
03	Chongjin	North Hamgyong Province	667,929
04	Nampho	South Pyongan Province	366,815
05	Wonsan	Kangwon Province	363,127
06	Sinuiju	North Pyongan Province	359,341
07	Tanchon	South Hamgyong Province	345,875
08	Kaechon	South Pyongan Province	319,554
09	Kaesong	North Hwanghae Province	308,440
10	Sariwon	North Hwanghae Province	307,764

The administrative divisions of North Korea are organized into three hierarchical levels. Many of the units have equivalents in the system of South Korea. At the highest level are nine provinces, two directly governed cities, and three special administrative divisions. The second-level divisions are cities, counties, wards, and districts. These are further subdivided into third-level entities: towns, neighborhoods, villages, and workers' districts.

The three-level administrative system used in North Korea was first inaugurated by Kim Il-sung in 1952, as part of a massive restructuring of local government. Previously, the country had used a multi-level system similar to that still used in South Korea.

The English translations are not official, but approximations. Names are romanized according to the McCune-Reischauer system as officially used in North Korea; the editor was also guided by the spellings used on the 2003 National Geographic map of Korea.

Korean romanization is a system for representing the Korean language using the Latin script. Korean also has an alphabetic script of its own called hangul, and is sometimes written using Chinese-style characters called hanja.

wall (byeok) on the wall (byeoge)
outside (bakke) kitchen (bueoke)
wikipedia (wikibaekgwa) hangul
(hangeul) character, letter (geulja) korea
has four distinct seasons (hangugeun
ne gyejeori tturyeothada) just check
the line color and width you want
(wonhasineun seon saekkkalgwa
gulkgie chekeuhasimyeon doemnida)

Romaja literally means Roman letters in Korean, and refers to the Latin script. “Romaja” is not to be confused with “romanization”. The former can be applied to any use of the Latin script in Korean text—whether for Korean or non-Korean words or names—while the latter refers to writing Korean words using the Latin script: either romanizing individual words in a Korean text, or writing an entire Korean text in the Latin script.

Doctrine Credits

**Published in 2013 by
VirusFonts. Designed
by Jonathan Abbott,
Jonathan Barnbrook,
and Julián Moncada.
Available to purchase
from virusfonts.com**

Copyright and Licences

© VirusFonts 2013.
See: VIRUSFONTS_EULA_2013.txt
for full licensing details.