

*t26 Digital Type Foundry  
presents*

# *Confetti*

*type specimen*

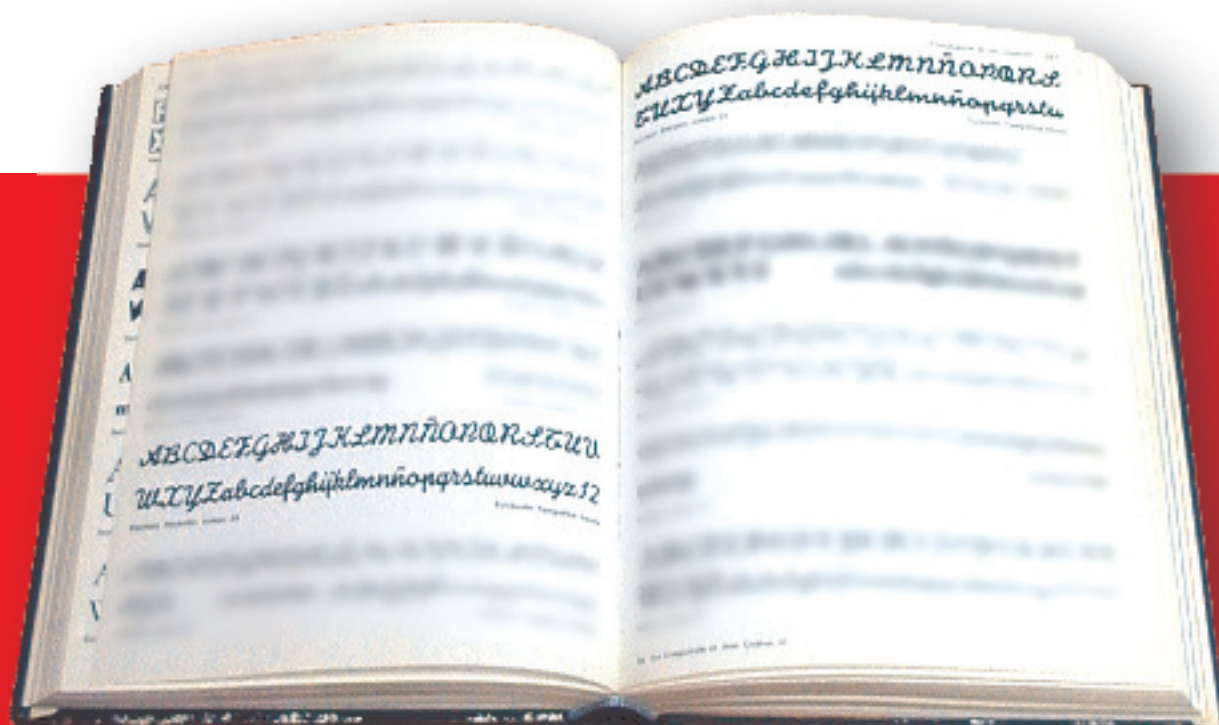


*By Josep Patao*

# About this font

This is a revival of the typography "Energica" and "Maravilla" made in Barcelona in 1930's, by the Spanish deceased foundry "Fundición Tipográfica José Tranzo"

The designer complete all the international characters Et symbols and add a new weight



Original samples of the Typefaces



## Confetti in use

---

Confetti  
Fine  
16p

*The first thing to keep in mind when thinking about the history and development of typography is that many early printers were not just printers, but typographers as well. The first independent typefounder was a French gentleman by the name of Claude Garamond. Although not the inventor of movable type, Garamond was the first to make type available to printers at an affordable price. Garamond based his type on the roman font of Griffo (a man commissioned by Manutius to develop an italic type for the Aldine classics).*

---

Confetti  
Medium  
16p

*The first thing to keep in mind when thinking about the history and development of typography is that many early printers were not just printers, but typographers as well. The first independent typefounder was a French gentleman by the name of Claude Garamond. Although not the inventor of movable type, Garamond was the first to make type available to printers at an affordable price. Garamond based his type on the roman font of Griffo (a man commissioned by Manutius to develop an italic type for the Aldine classics).*

---

Confetti  
Black  
16p

*The first thing to keep in mind when thinking about the history and development of typography is that many early printers were not just printers, but typographers as well. The first independent typefounder was a French gentleman by the name of Claude Garamond. Although not the inventor of movable type, Garamond was the first to make type available to printers at an affordable price. Garamond based his type on the roman font of Griffo (a man commissioned by Manutius to develop an italic type for the Aldine classics).*

---

*Confetti in use*

---

*Hamburguerfont*

*Gromendauer*

*Eractorada popular*

*Georgetown*

*An Incredible Flavour*

*Gaudí and the Sagrada Família*

*vegetal sandwich*

*Quàiteu les nubilles festejadores*

---

*Combine Confetti*

---

Whit Adobe Garamond

Crédito  
*personal!*

Whit Lubalin Graph Bold

*Spaghetti*  
**WESTERN**

Whit Gill Sans Ultra Bold

**Rock!**  
**FESTIVAL**

*Combine Confetti*

---

Whit Palatino Black

**Woman**  
*fantasy*

Whit Futura Light

*Chevrolet Corvette*  
UN LLEGENDARI AUTOMOVIL

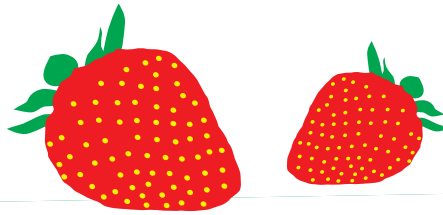
Whit Frutiger 95

**HARDCORE**  
*Mountain Bikes*

*Confitura  
de maduixes*

*“dels boscs del Pirineu”*

*Recepta tradicional del Pallars Sobirà*



*Un dels millors tresors que amaga el pirineu al seus  
bocs, son sens dubte, les maduixes silvestres, un  
esclat de sabor concentrat de maduixa, presentat  
segons la recepta tradicional de les valls dels Pallars*

*450 gr.*



## *Confetti in use*

---

