



Monospaced
in 6 Weights

Ap^rex Mono

Monospaced
By S6Foundry

Supports up to
92 different languages

Light

Plüschfiguren 200
PUMPERNICKEL

Book

Mobilfunkuhr 300
BRAUTJUNGFER

Regular

Kindergarten 400
PLÜSCHFIGUREN

Medium

Pumpernickel 500
DREIKÄSEHOCH

Semi bold

Großwildjagd 600
MIXGEFÄSSWAND

Bold

Postkutscher 700
Pumpernickel



prex Mono

Aprex Mono

By s6 Foundry

Aprex Mono is a typeface that has an stylised industrial version of Apex Sans, with multilanguages support.

Available in 6 different styles

APREX MONO

Aprex Mono

Available in 6 different styles

/ s6 Foundry

Mono is a typeface that has an stylised industrial version of Apex Sans, with multilanguages support.

PREX MONO

Aprex Mono

By s6 Foundry

Aprex Mono is a typeface that has an stylised industrial version of Apex Sans, with multilanguages support.

Available in 6 different styles

EX MONO

APREX MONO

Mono

x Mono

Available in 6 different styles

Aprex Mono is a typeface that has an stylised industrial version of Apex Sans, with multilanguages support.

A B C D E F G H
I J K L M N O P
Q R S T U V W
X Y Z 0 1 2 3 4 5
6 7 8 9 a b c d e
f g h i j k l m n o
p q r s t u v w x
y z

Aprex Mono is a
Monospaced stylized
industrial version
of the Aprex Sans
typeface, with
multilingual support.

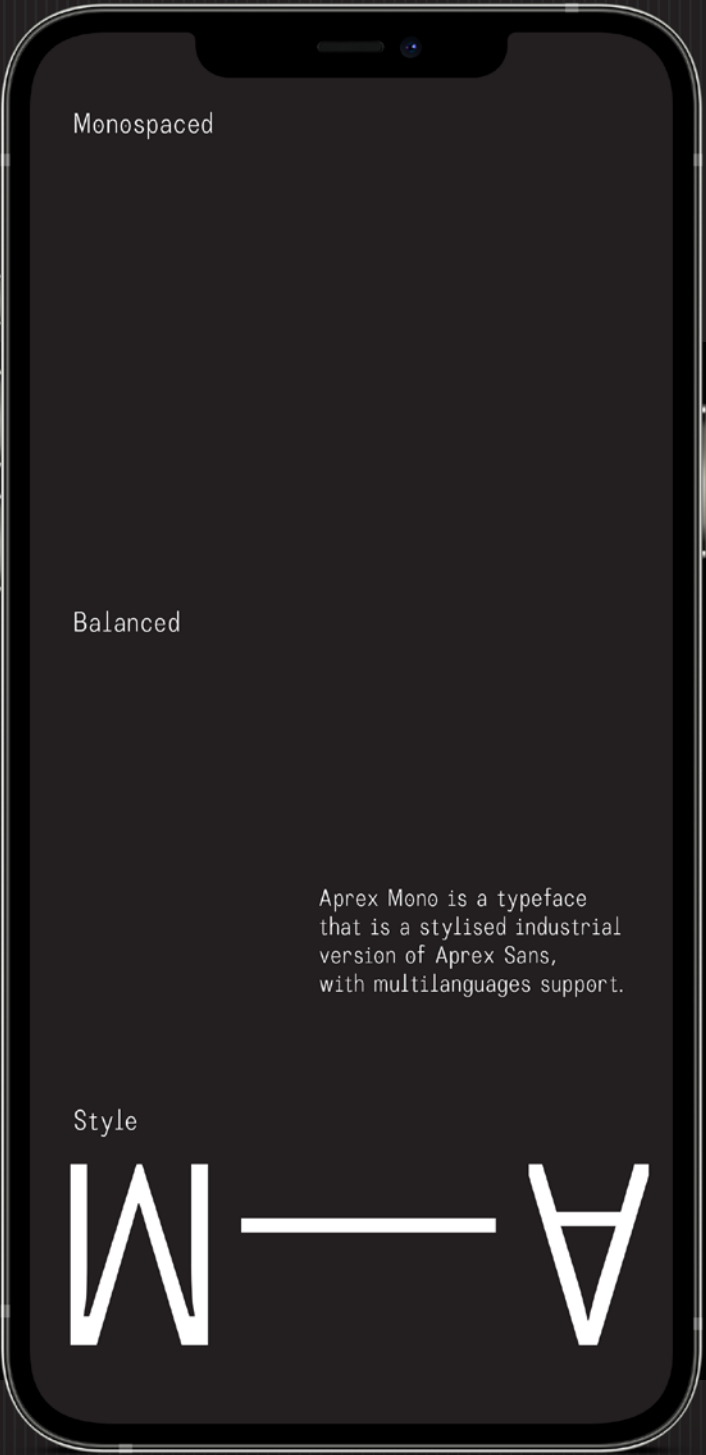
Light
Book
Regular
Medium
Semi Bold
Bold

Monospaced
By S6Foundry

LIGHT
BOOK
REGULAR
MEDIUM
SEMI BOLD
BOLD

Monospaced
in 6 Weights

Monospaced
By S6Foundry



M M M



The font is inspired by a basic sans serif glyphs structure, concerning the balance and optimization that bring a clean typeface, versatile for both display and body text use ideal for adding a touch of style to your creations and layouts!

ABCDEFGHIJKLMN
OPQRSTUVWXYZ
0123456789
abcdefghijklmnopqrstuvwxyz

M M M



ABCDEFGHIJKLMN
OPQRSTUVWXYZ
0123456789
abcdefghijklmnopqrstuvwxyz

Monospaced Typography

Supports up to
92 different lan-
guages

Monospaced
By S6Foundry

Light

Book

Regular

Medium

Semi Bold

Bold

Light 10/12pt
Structuralism, in cultural anthropology, the school of thought developed by the French anthropologist Claude Lévi-Strauss, in which cultures, viewed as systems, are analyzed in terms of the structural relations among their elements. According to Lévi-Strauss’s theories, universal patterns in cultural systems are products of the invariant structure of the human mind. Structure, for Lévi-Strauss, referred exclusively to

Book 10/12pt
Structuralism, in cultural anthropology, the school of thought developed by the French anthropologist Claude Lévi-Strauss, in which cultures, viewed as systems, are analyzed in terms of the structural relations among their elements. According to Lévi-Strauss’s theories, universal patterns in cultural systems are products of the invariant structure of the human mind. Structure, for Lévi-Strauss, referred exclusively to mental structure, although he found evidence of such structure in his far-ranging analyses of kinship, patterns in mythology, art, religion, ritual, and culinary traditions.

Regular 10/12pt
Structuralism, in cultural anthropology, the school of thought developed by the French anthropologist Claude Lévi-Strauss, in which cultures, viewed as systems, are analyzed in terms of the structural relations among their elements. According to Lévi-Strauss’s theories, universal patterns in cultural systems are products of the invariant structure of

Medium 10/12pt
Structuralism, in cultural anthropology, the school of thought developed by the French anthropologist Claude Lévi-Strauss, in which cultures, viewed as systems, are analyzed in terms of the structural relations among their elements. According to Lévi-Strauss’s theories, universal patterns in cultural systems are products of the invariant structure of the human mind. Structure, for Lévi-Strauss, referred exclusively to mental structure, although he found evidence of such structure in his far-ranging analyses of kinship, patterns in mythology, art, religion, ritual, and culinary traditions.

Semi Bold 10/12pt
Structuralism, in cultural anthropology, the school of thought developed by the French anthropologist Claude Lévi-Strauss, in which cultures, viewed as systems, are analyzed in terms of the structural relations among their elements. According to Lévi-Strauss’s theories, universal patterns in cultural systems are products of the invariant structure of the human mind. Structure, for Lévi-Strauss, referred exclusively to mental structure, although he found evidence of such structure in his far-ranging analyses of kinship, patterns in mythology, art, religion, ritual, and culinary traditions.

Bold 10/12pt
Structuralism, in cultural anthropology, the school of thought developed by the French anthropologist Claude Lévi-Strauss, in which cultures, viewed as systems, are analyzed in terms of the structural relations among their elements. According to Lévi-Strauss’s theories, universal patterns in cultural systems are products of the invariant structure of the human mind. Structure, for Lévi-Strauss, referred exclusively to mental structure, although he found evidence of such structure in his far-ranging analyses of kinship, patterns in mythology, art, religion, ritual, and culinary traditions.

Text samples

Regular/Bold 12/14pt
The basic framework of Lévi-Strauss’s theories was derived from the work of structural linguistics. From N.S. Trubetzkoy, the founder of structural linguistics, Lévi-Strauss developed his focus on unconscious infrastructure as well as an emphasis on the relationship between terms, rather than on terms as entities in themselves. From the work of Roman Jakobson, of the same school of linguistic thought, Lévi-Strauss adopted the so-called distinctive feature method of analysis, which postulates that an unconscious “metastructure” emerges through the human mental process of pairing opposites. In Lévi-Strauss’s system the human mind is viewed as a repository of a great variety of natural material, from which it selects pairs of elements that can be combined to form diverse structures. Pairs of oppositions can

Regular/Bold 16/18pt
The basic framework of Lévi-Strauss’s theories was derived from the work of structural linguistics. From N.S. Trubetzkoy, the founder of structural linguistics, Lévi-Strauss developed his focus on unconscious infrastructure as well as an emphasis on the relationship between terms, rather than on terms as entities in themselves. From the work of Roman Jakobson, of the same school of linguistic thought, Lévi-Strauss adopted the so-called distinctive feature method of analysis, which postulates that an unconscious “metastructure” emerges through the human mental process of pairing opposites. In Lévi-Strauss’s system the human mind is viewed as a repository of a great variety of natural material, from which it selects pairs of elements that can be combined to form diverse structures. Pairs of oppositions can be separated into singular elements for use in forming new oppositions.

